

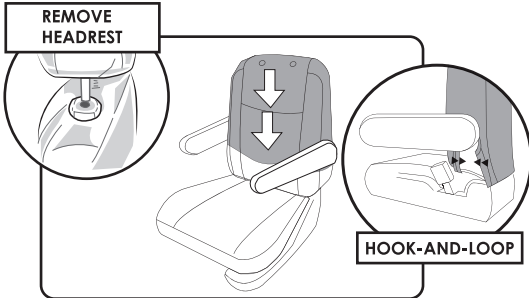
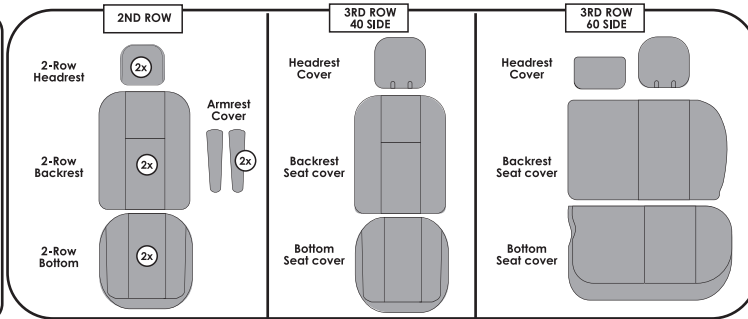
CM5020 2ND & 3RD ROWS



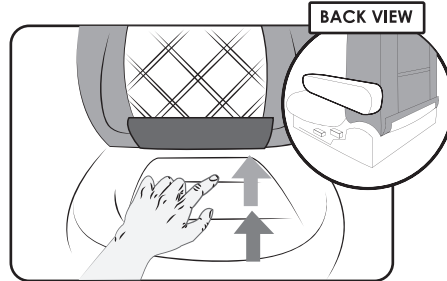
Video instructions are available at <https://www.fhgroupauto.com/product/custom-car-seat-covers-for-2011-2020-toyota-sinena-full-set/>

Warning

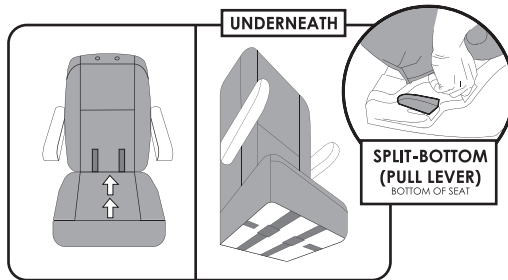
- Machine wash cold, delicate cycle. Air dry only.
- Avoid sharp objects to protect covers from being scratched/damaged.
- We suggest wearing protective eyewear and gloves during installation.



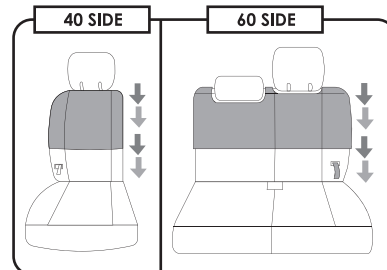
- To start, remove the headrest by pushing the release button at the base of the headrest. Then, slide the backrest cover onto the seat. Once it's on, attach the hook-and-loop attachments located under the armrests.



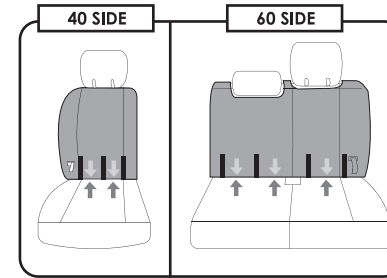
- Push the straps through the seat crevice, and position the straps to the back of the seat.



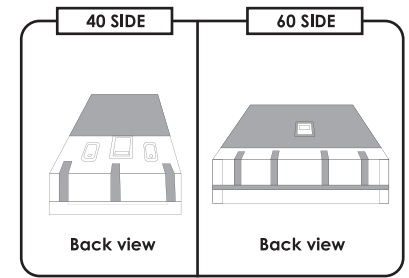
- Place the bottom seat covers on your car seat. Push the straps through the seat crevice, and connect the buckles and hook-and-loop underneath your seat. Please repeat the same process to install the other 2-Row seat.



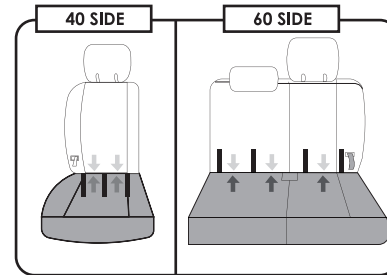
- To install the 3-row seat covers, slide on both backrests covers (40 and 60 sides) onto the seats.



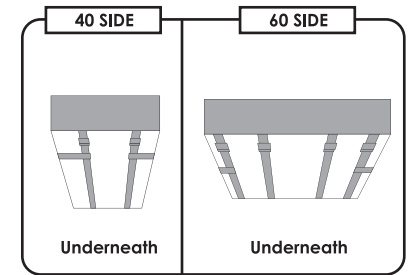
- Push the straps through the seat crevice, and position the straps to the back of the seat.



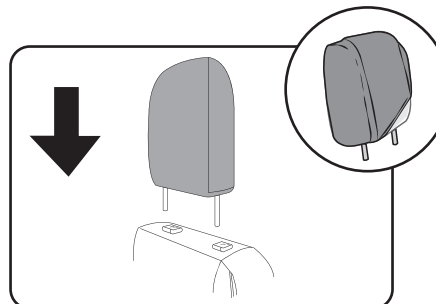
- Once the hook-and-loop straps are pushed through the seat crevice all the way, connect them to the back upholstery of your car seats as shown in the image.



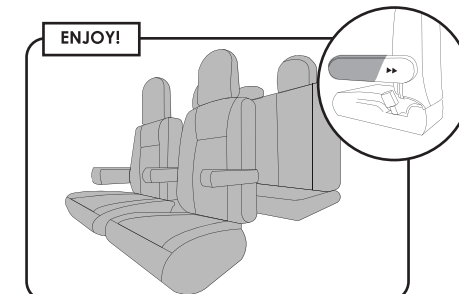
- Place both bottom seat covers (40 and 60 side) onto the seat bottom. Then, push the buckle straps through the seat crevice and position the straps underneath your seat.



- Connect the buckle straps underneath the seat as shown in the image.



- Reattach the headrests to the seats and slip on the headrest covers. TIP: Starting from either side of the headrest and sliding the cover sideways will help you achieve a secure fit.



- Slide on the armrest cover over the armrests. Lastly, Adjust and smooth out your custom-fit seat covers and enjoy!