

INSTALLATION IS THE KEY



watch installation videos at
<https://www.fhgroupauto.com/installation/>

For more info, call 1-800-928-5518
or email us at info@fhgroupauto.com



NEED HELP?

Have Questions About Your Order?
FH Group® representatives are ready to help!

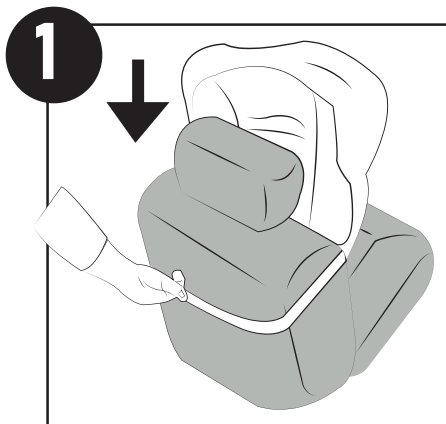
Watch Our Installation Videos
Watching our instructional videos FIRST will save time and answer most of your questions. With some patience and proper installation, you can enjoy beautifully fitted covers before you know it (turn over to learn where you can watch our videos).

Toll Free
1-800-928-5518
info@fhgroupauto.com

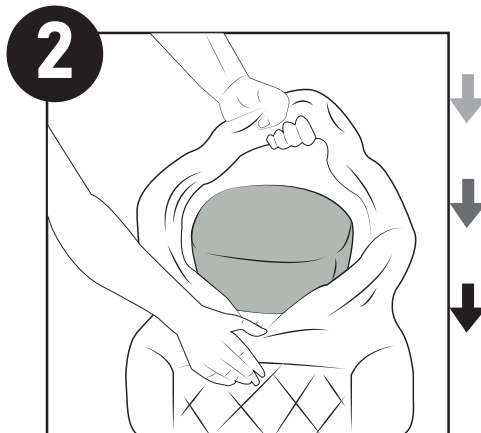
Instruction Manual

FB078102/ FB088102/ FB089102/ PU088/ PU089

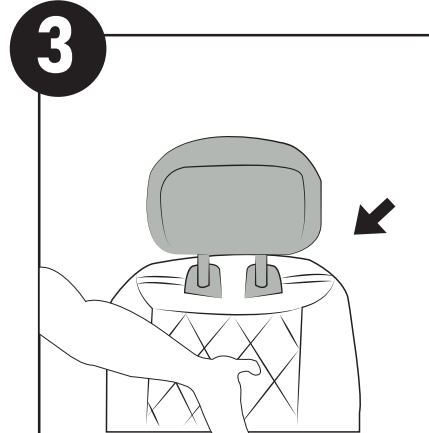
Video instructions are available at <https://www.fhgroupauto.com/installation>



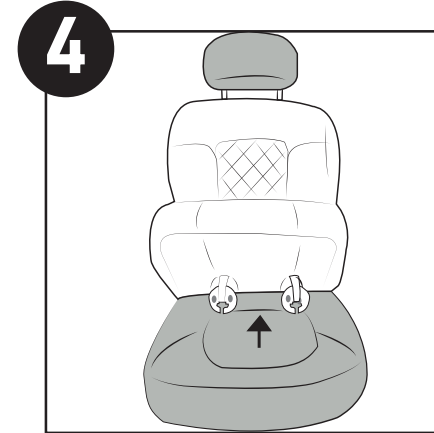
Locate the strap at the back of the cushion. Stretch it out and slide the entire cover over the headrest, pulling the cover down a bit. Position the cover's back strap in the middle of the seat.



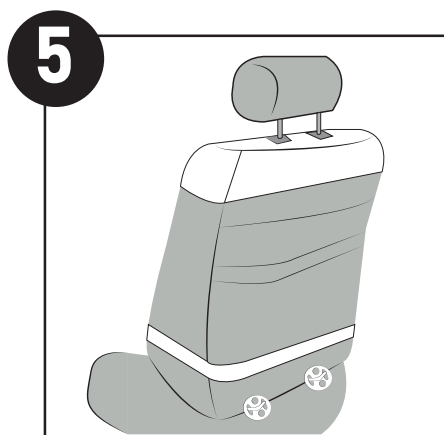
To continue, open the hook-and-loop seal at the top of the cover and pull the rest of the cover down over the upper portion of the seat.



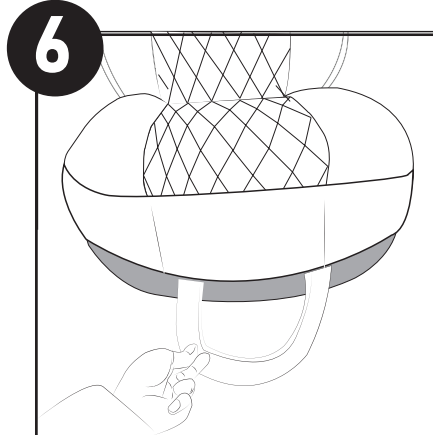
Once the cover fits snugly, close the top by securing the hook-and-loop pieces together around the headrest supports.



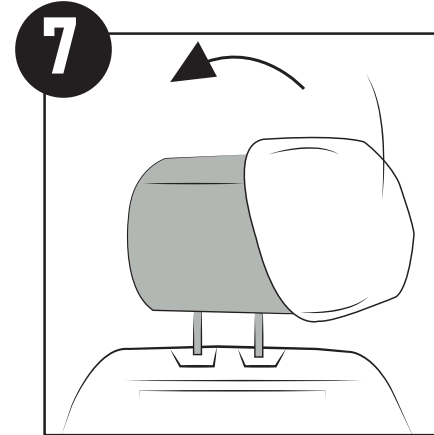
Locate the two butterfly discs on the back of the cushion. Push the butterfly discs through the seat crevice and position the discs upward against the back of the seat.



The back of your seat should resemble the image above. NOTE: If there is a flap at the back of your seat, you can unhook and then re-hook the flap to push the discs through.



For a more secure fit, remove the hooks from the bag to attach the front strap underneath the seat. WE SUGGEST WEARING PROTECTIVE EYEWEAR FOR THIS STEP! You may have to look underneath or feel around for a secure place to hook the strap.



Encase the headrest with the provided cover. Start from either side of the headrest and slide the cover over sideways for a secure fit.