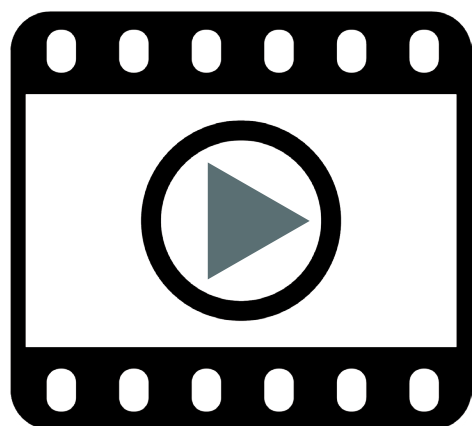




INSTALLATION IS THE KEY



watch installation videos at
<https://www.fhgroupauto.com/installation/>

For more info, call 1-800-928-5518
or email us at info@fhgroupauto.com



NEED HELP?

Have Questions About Your Order?
FH Group® representatives are ready to help!

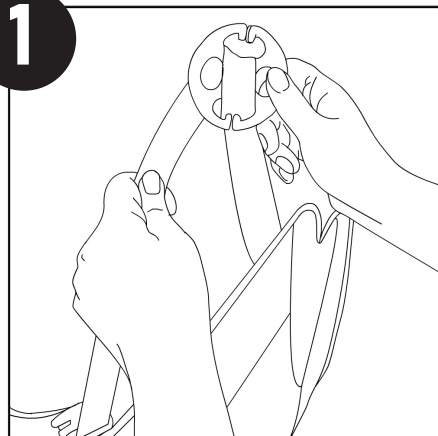
Watch Our Installation Videos
Watching our instructional videos FIRST will save time and answer most of your questions. With some patience and proper installation, you can enjoy beautifully fitted covers before you know it (turn over to learn where you can watch our videos).

Toll Free
1-800-928-5518
info@fhgroupauto.com

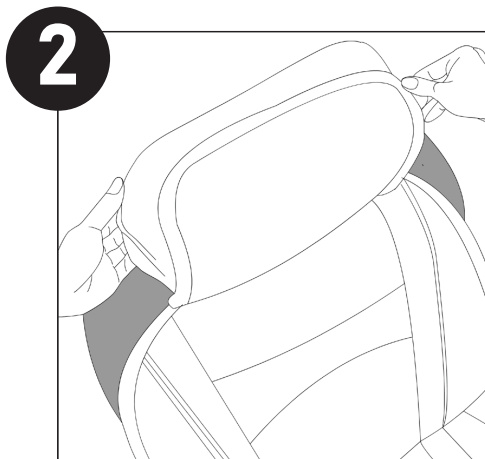
Installation Manual

PU207/ PU208

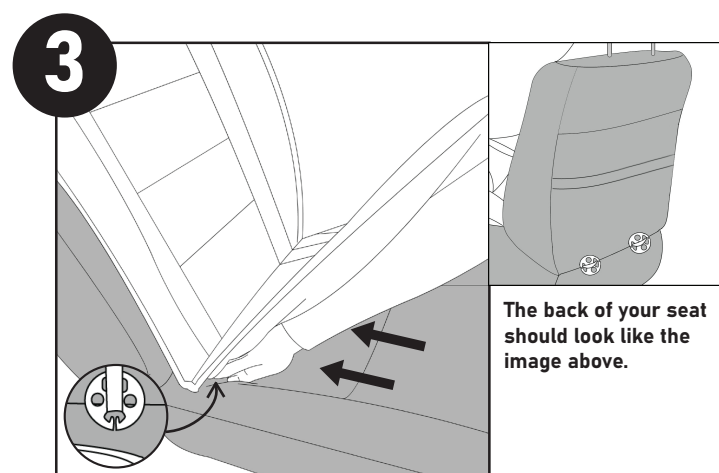
Video instructions are available at <https://www.fhgroupauto.com/installation>



Remove the butterfly discs from the back. Locate the straps on the back of the cover and loop each through a butterfly disc.

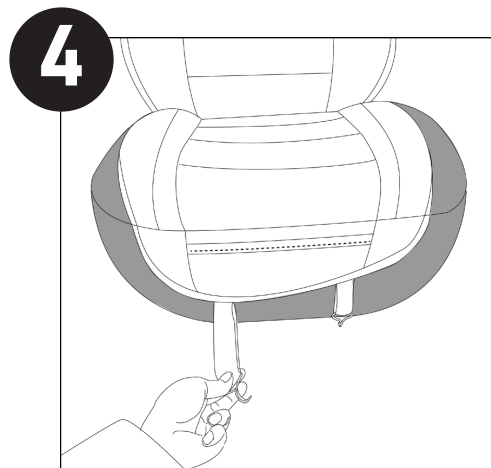


Put the cover on the seat, sliding the headrest cover over the headrest and then buckle the strap behind the headrest to fasten.



The back of your seat should look like the image above.

Push the butterfly discs and elastic straps through the seat's center crevice to the other side of the seat.



Optional: for a more secure fit, attach the hooks found in the bag to the bottom straps of the seat cover (you must pull open the hooks). Latch the hooks underneath your seat to any available bars/metal hardware (WE SUGGEST WEARING PROTECTIVE EYEWEAR AND GLOVES). You may have to look underneath for a secure place to hook your seat cover.