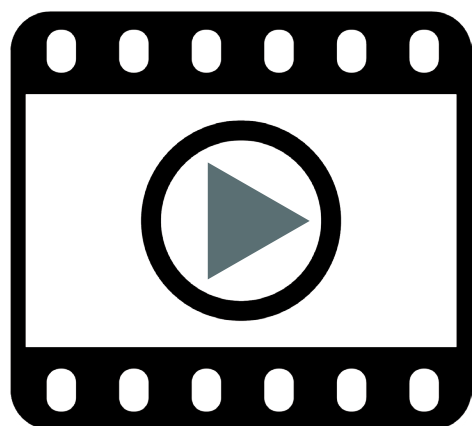




# INSTALLATION IS THE KEY



watch installation videos at  
<https://www.fhgroupauto.com/installation/>

For more info, call 1-800-928-5518  
or email us at [info@fhgroupauto.com](mailto:info@fhgroupauto.com)



# NEED HELP?

**Have Questions About Your Order?**  
FH Group® representatives are ready to help!

**Watch Our Installation Videos**  
Watching our instructional videos FIRST will save time and answer most of your questions. With some patience and proper installation, you can enjoy beautifully fitted covers before you know it (turn over to learn where you can watch our videos).

**Toll Free**  
**1-800-928-5518**  
**[info@fhgroupauto.com](mailto:info@fhgroupauto.com)**

# Installation Manual

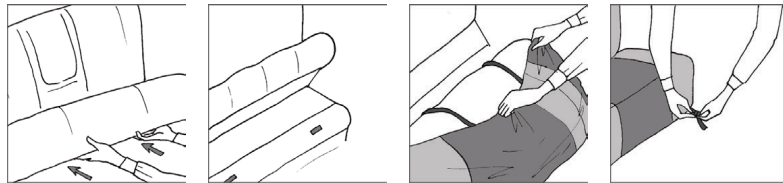
Video instructions are available at <https://www.fhgroupauto.com/installation>

**ATTENTION: DO NOT cut anything before you are completely sure the seat cover is aligned and fitted to your satisfaction.**

Note: we suggest removing or lifting your seat for an easier installation. To lift up your bench seat, locate the control on the bench and push to yank it up.

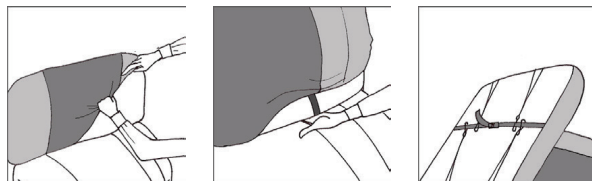
## Rear Seat Bottom Cover:

1. Locate the rear seat bottom cover in your package: it is labeled with a "Bench Bottom" tag on the cover's inside border (the cover looks similar to the backrest cover except it's smaller in size and affixed with 3 pieces of mesh cloth).
2. Fit the cover over the seat and secure it by fastening the straps on the bottom (for an extra snug fit, fasten the cover's elastic loops together using the supplied snaps). The straps will stay hidden underneath the seat. You can also secure the cover by tucking the mesh cloth underneath the seat.



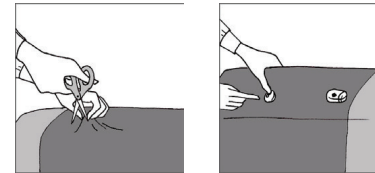
## Rear Backrest Cover:

1. Locate the backrest cover: it is labeled with a "Bench Backrest" tag on the cover's inside border.
2. Remove the seat's headrests. If your headrests aren't removable, cut a line along the edge of the backrest cover to install (the material will not rip).
3. Fit the cover over the backrest. Push the cover's bottom straps through the seat crevice towards the back. Fasten the straps from the back side of the bench (as an optional step, connect the loops using the supplied snaps). You can also secure it by tucking in the mesh cloth on the side of the seat.



## Rear Headrest Cover:

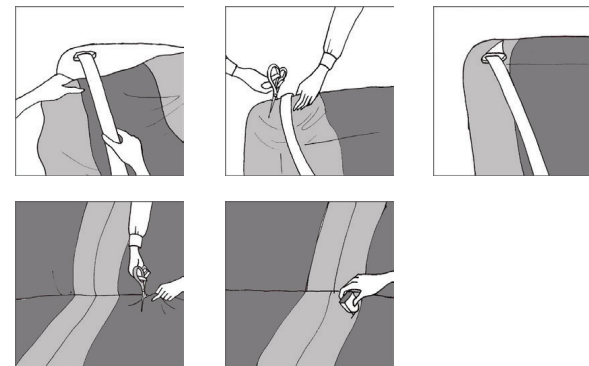
Fit the headrest cover over the rear bench headrest. Cut two tiny holes on top of the backrest cover where the headrest needs to be reinserted. DO NOT cut anything before you're completely sure the backrest cover is aligned and fitted to your satisfaction (as an optional step, stuff the material underneath the rim for a smoother look). Reinsert the headrest and fasten the cover's straps to secure.



## Note - Rear Seat Belt Adjustment:

**Backrest:** Make sure you pull out the seat belt first. Then fit the seat cover over the backrest, making sure the seat belt rests on top of the cover and not beneath. Cut a slit along the cover where the seat belt will come out.

**Seat:** Double-check that the rear seat covers are fitted to your satisfaction. Then cut two small holes where the belt buckles are located and pull the belt buckles out. The material will not rip.



For installation videos go to  
[www.fhgroupauto.com/installation](https://www.fhgroupauto.com/installation)